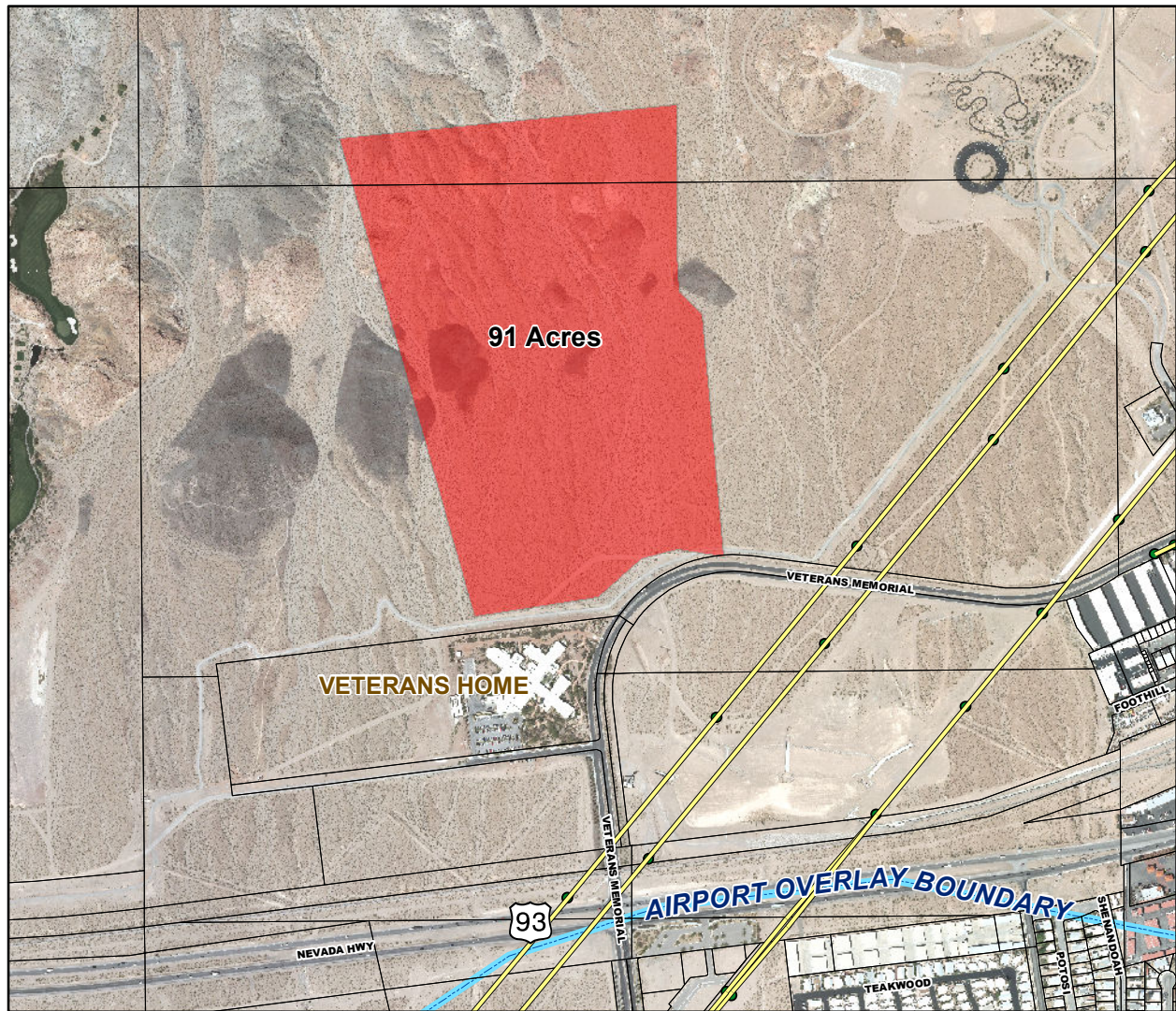
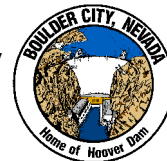


# Zelaya Request

LMP# 17-01



Site Name: Zelaya Request  
Address: Just north and east of the Veterans Home on Veterans Pkwy  
APN: 18606000006, 18607101003  
Zoning: SR (Special Recreation)  
Airport Overlay: No - Not within airport influence environs  
Master Plan: PR (Public Recreation), OL (Open Lands)  
Utilities:  
Water: Yes/No. Will need to conduct study for capacity  
Sewer: Yes/No. Will need to conduct study for capacity  
Electric: Yes/No. Will need to conduct study for capacity  
Unique Issues: Virgin land - has never been developed. Will need additional studies performed prior to development



Map prepared by:  
Brok Armantrout  
Director, Community Development  
City of Boulder City, Nevada  
October 10, 2016