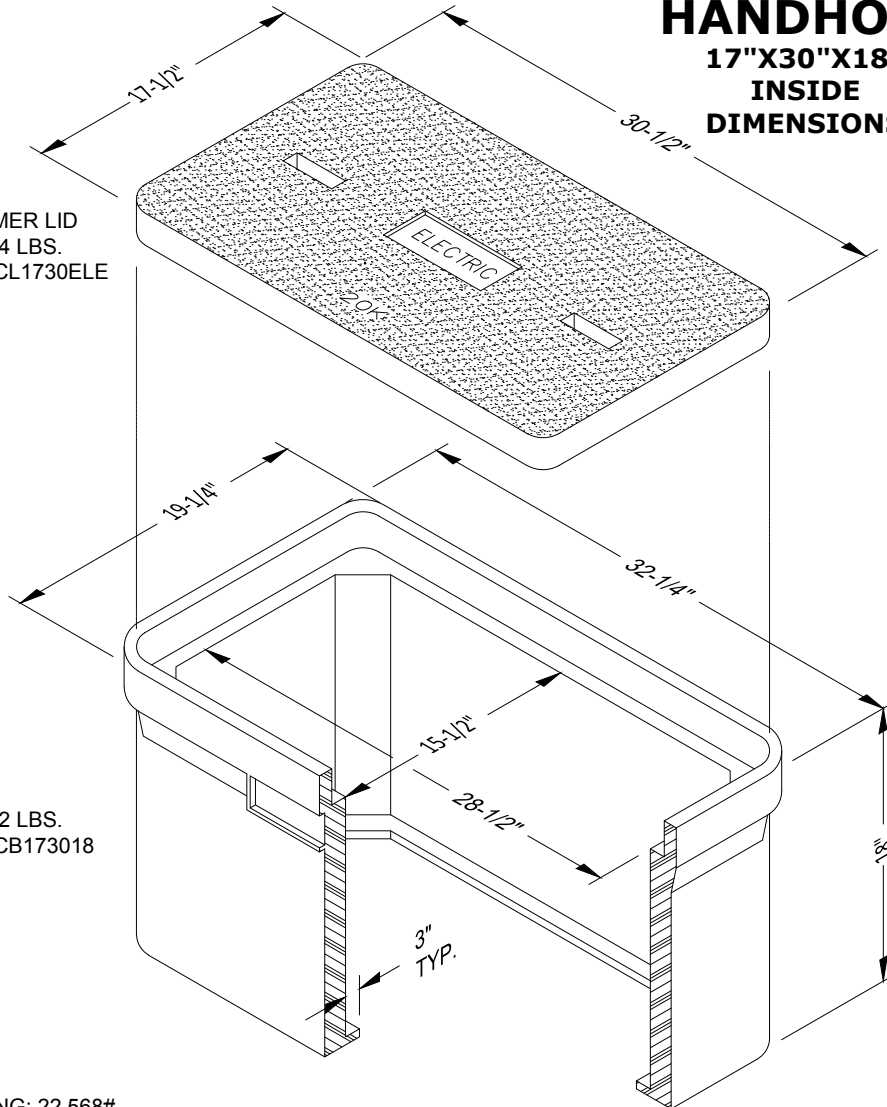


JRS-1 HANDHOLE

17"X30"X18"
INSIDE
DIMENSIONS

*20K POLYMER LID
WEIGHT - 74 LBS.
STOCK # PCL1730ELE



*BOX
WEIGHT - 92 LBS.
STOCK # PCB173018

LOAD RATING: 22,568#
VERTICAL TEST LOAD OVER A 10" X 10" TEST
AREA.

*FOR USE IN SIDEWALKS, ROADWAY MEDIANS
AND BEHIND CURB LOCATIONS WHERE NO
DELIBERATE VEHICULAR TRAFFIC IS PLANNED.

FOR COMPLETE DESIGN AND PRODUCT
INFORMATION, CONTACT JENSEN PRECAST.

CONTRACTOR MAY USE AN ALTERNATE
MANUFACTURER'S J-BOX (HANDHOLE) UPON
APPROVAL BY A DESIGNATED CITY
REPRESENTATIVE.

JENSEN
PRECAST®

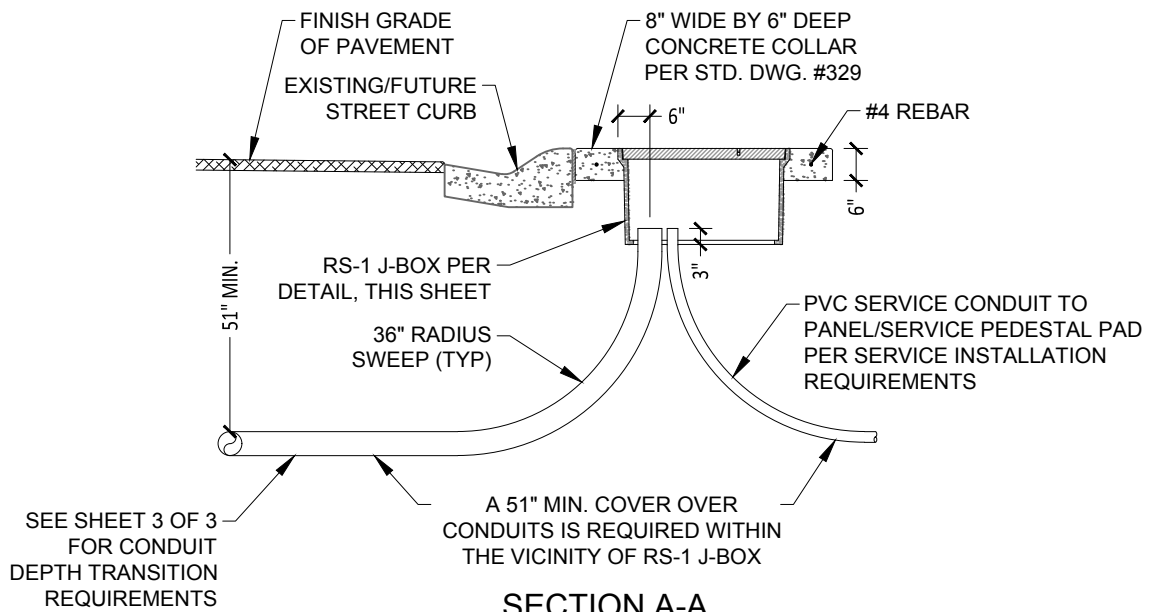


**CITY OF
BOULDER CITY, NV**
**PUBLIC WORKS
DEPARTMENT
ENGINEERING
DIVISION**

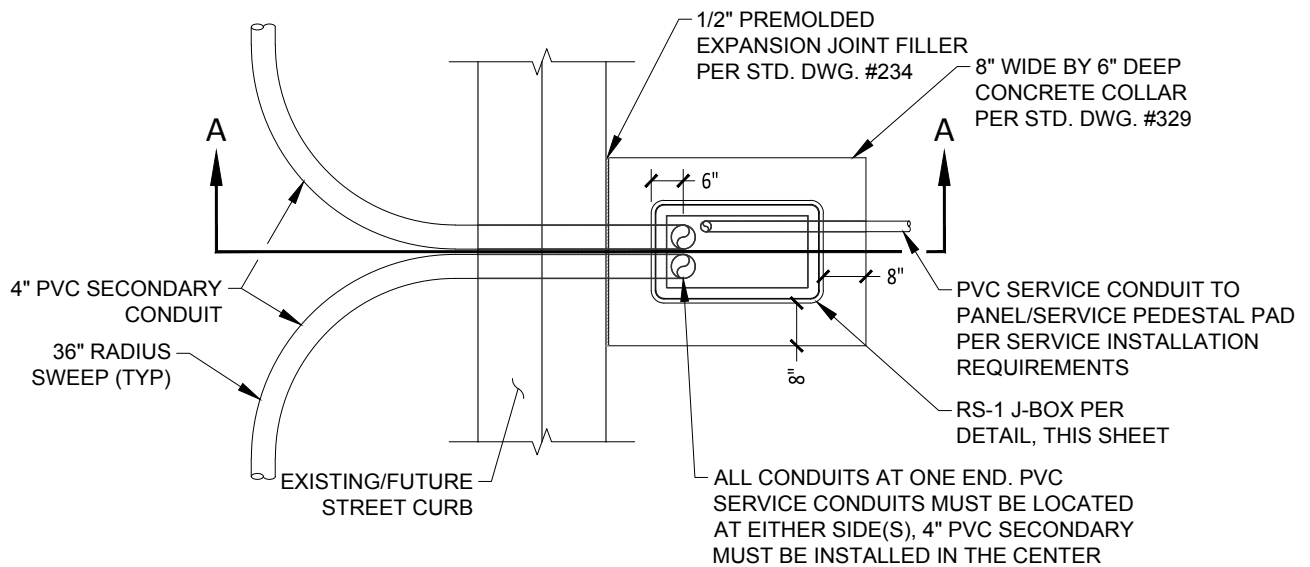
STANDARD DRAWING
ELECTRICAL INFRASTRUCTURE REQUIREMENTS

RS-1 J-BOX (HANDHOLE)

CREATED BY:
M. GRIMES
ISSUE DATE:
2/1/18
FILE NAME:
BC-RS-1.dwg
SHEET:
1 OF 3



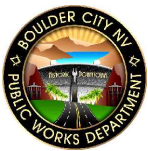
SECTION A-A
NOT TO SCALE



PLAN VIEW
NOT TO SCALE

NOTES:

1. THERE SHALL BE A MINIMUM OF 6' OF CLEARANCE FROM THE J-BOX TO THE CENTER OF A FIRE HYDRANT.
2. THERE SHALL BE A MINIMUM 1" SEPARATION BETWEEN CONDUITS TO FACILITATE THE INSTALLATION OF DEBRIS SEALS.
3. SEE TRENCH DETAILS FOR BACKFILL AND SAND BEDDING REQUIREMENTS.
4. THE RS-1 J-BOX AND CONCRETE COLLAR SHALL SIT UPON MIN. 6" THICK TYPE II BASE (NOT SHOWN) COMPACTED TO 90%.

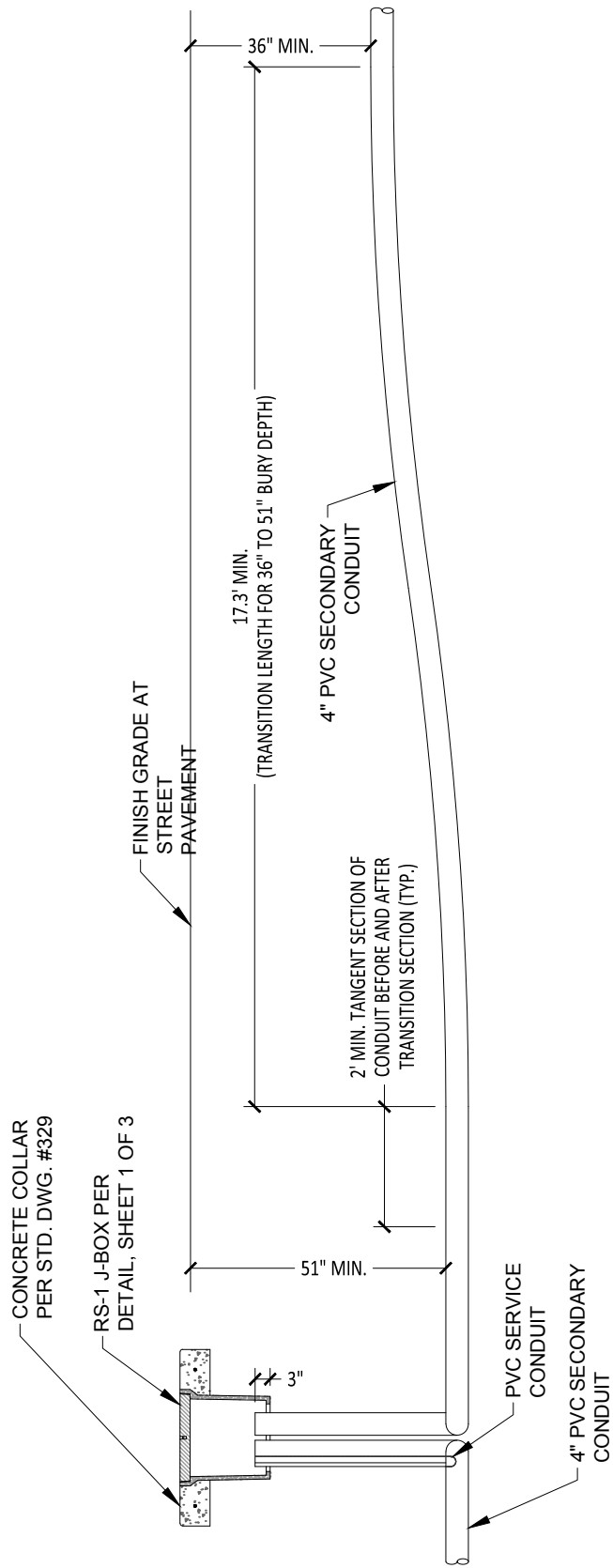


**CITY OF
BOULDER CITY, CO**
**PUBLIC WORKS
DEPARTMENT
ENGINEERING
DIVISION**

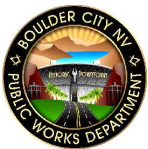
**STANDARD DRAWING
ELECTRICAL INFRASTRUCTURE REQUIREMENTS**

RS-1 J-BOX (HANDHOLE)

CREATED BY:
M. GRIMES
ISSUE DATE:
2/1/18
FILE NAME:
BC-RS-1.dwg
SHEET:
2 OF 3



CONDUIT BURIAL TRANSITION
NOT TO SCALE



CITY OF BOULDER CITY, NV
PUBLIC WORKS DEPARTMENT
ENGINEERING DIVISION

STANDARD DRAWING
ELECTRICAL INFRASTRUCTURE REQUIREMENTS

RS-1 J-BOX (HANDHOLE)

CREATED BY: M. GRIMES
ISSUE DATE: 2/1/18
FILE NAME: BC-RS-1.dwg
SHEET: 3 OF 3