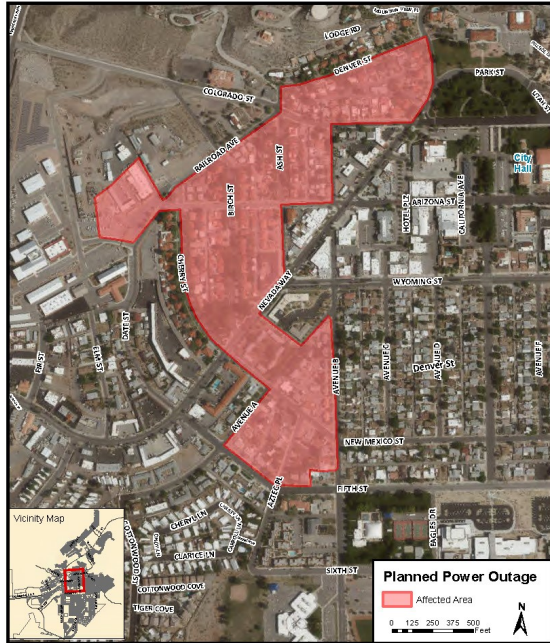




Planned Power Outage on Tuesday Morning



Tuesday morning, November 2nd, the Electric Division will conduct an early morning power outage on Circuit 16 out of Substation 1 (500 Railroad). This outage is needed to separate and isolate portions of cable required to switch out and de-energize Substation 1 for continued construction on the Arizona CIP project. Areas affected by outage will be from:

- Railroad south at Date to Colorado;
- Colorado/Denver/Arizona to Nevada Way;
- Cherry St.; Birch St.; Ash St.; west side of Nevada Way between Ash and Colorado;
- New Mexico west of Nevada Way to Ave B.

The outage is scheduled begin at 3:00 a.m. and should take approximately two hours.

Upcoming Meetings and Workshops

Public attendance is allowed at meetings. You will be required to wear a face covering until the Governor lifts the current mandate. You can email comments in advance or participate during the live stream by calling when prompted. Watch live on BCTV channel 2 or online at www.bcnv.org/streaming.

- | | |
|--|--------------------------------------|
| • Utility Advisory Committee Meeting | November 3 at 3:00 p.m. |
| • Business License Liquor Board Meeting | November 4 at 8:30 a.m. |
| • City Council Regular Meeting | November 9 at 7:00 p.m. |
| • Airport Control Tower Open House | November 15 - 4:30 p.m. to 6:30 p.m. |
| • City Council Special Workshop on BC Fire Dept. | November 17 at 2:00 p.m. |
| • Planning Commission Meeting | November 17 at 6:00 p.m. |
| • City Council Regular Meeting | November 23 at 7:00 p.m. |
| • Historic Preservation Committee Meeting (<i>note date</i>) | November 30 at 5:00 p.m. |
| • City Council Special Meeting on Tract 350 | November 30 at 2:00 p.m. |

City of Boulder City Communications

401 California Ave.
Boulder City, NV 89005
(702) 293-9302
www.bcnv.org



www.facebook.com/bouldercitynv
www.twitter.com/bouldercitynev
www.instagram.com/bouldercitynevada
www.linkedin.com/company/city-of-boulder-city
www.youtube.com/BCTVBoulderCityNVGovernmentChannel